

Arterial Duct System

- Reduces installation time
- Can be applied in SAP as a rigid duct system
- Crush resistant semi-rigid duct
- Unique low-resistance manifolds
- Simple installation through joists
- Smooth inner surface with antistatic and antibacterial coating
- Combines the advantages of rigid ducting with the versatility of a semi-rigid system



Arterial System

For use with MVHR systems, the Arterial air distribution system provides a flexible, highly robust solution, which can significantly reduce the installation time when compared to a standard system.

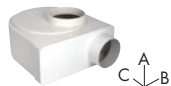
Rigid vs Semi-Rigid Systems

Both traditional duct types have limitations in modern construction. **Rigid systems:** Passing rigid duct through a floor cassette at right-angles to the joists is time consuming and multiple connections increase the risk of leaking ductwork. **Semi-rigid Systems:** It can often be difficult to accommodate two distribution boxes and multiple semi-rigid pipe runs in new buildings and the time saving advantages are soon overtaken by the additional cost of materials.

Reduced Installation Time

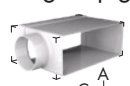
The Vent-Axia Arterial range combines the advantages of semi-rigid and traditional rigid ducting in one simple system. The system is independently tested and can be applied in SAP as a standard rigid system. Drops between floors to/from the MVHR unit remain in rigid PVC, having the advantage of low space usage and low cost. Traversing through joists in a floor cassette is much simpler and faster when using semi-rigid duct. The secret to the Arterial System is the unique low-resistance distribution plenum (Patent Pending) which is sited between joists allowing connection between semi-rigid and rigid sections.

100mm Elbow Bend to 90mm



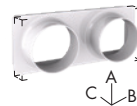
Stock Ref	O/I Ømm	External Dimensions (mm)		
		A	B	C
496741	90/78	119	226	280

Single Spigot Adaptor



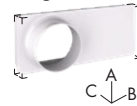
Stock Ref	Duct Size	External Dimensions (mm)		
		A	B	C
408872	220x90 to 78Ø	94	258	150

Double Connector Plate



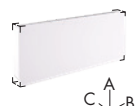
Stock Ref	Duct Size	External Dimensions (mm)		
		A	B	C
408873	220x90 to 78Ø	98	226	66

Single Connector Plate



Stock Ref	Duct Size	External Dimensions (mm)		
		A	B	C
408874	220x90 to 78Ø	98	226	66

Blank Plate



Stock Ref	Duct Size	External Dimensions (mm)		
		A	B	C
408875	220x90 to 78Ø	98	226	26

Reducer



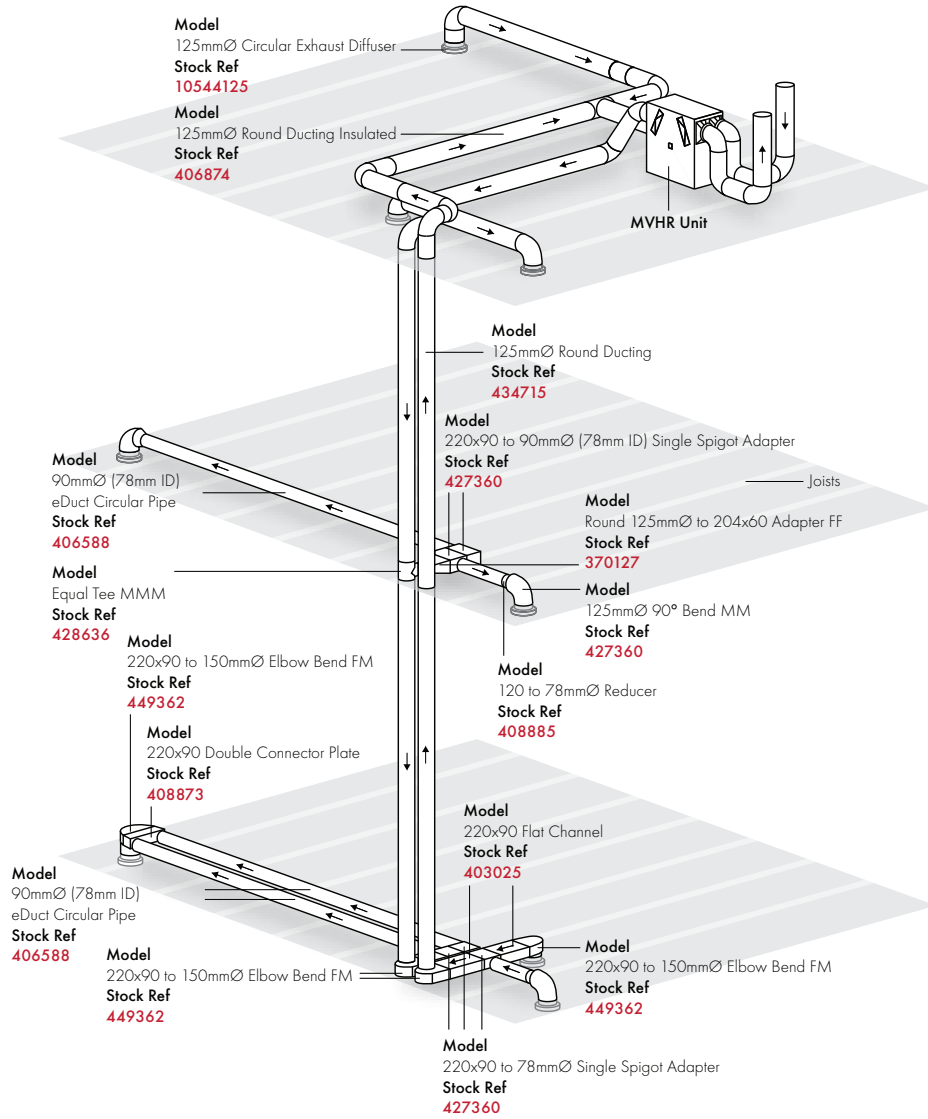
Stock Ref	Duct Size	External Dimensions (mm)		
		A	B	C
408885	120 to 78Ø	129	105	129

Semi-Rigid Ducting



Stock Ref	O/I Ømm	Length m	Coil Height		kg
			Coil Ømm	mm	
412607	90/78	50	1130	250	19.5
412608	90/78	25	1130	125	9.8

Complete System Setup Example



System Configuration Examples

