

LED LuminAir Turbo Fan & Light Ventilation Kit

- Unique fan and light combination
- IPX7 rated inlet assembly
- Suitable for shower enclosures and wet areas - can be used within reach of a person using a bath or shower
- Safety extra low voltage (SELV) lamp
- Easy installation
- White and Chrome bezels available
- LED Driver



High Performance Fan & Light Combination

LuminAir is also available in the form of a ventilation kit. The IPX7 unit is installed directly over a shower in complete safety.

Vent-Axia LuminAir extracts moisture and humidity at source, preventing damaging condensation from spreading. At the same time it bathes the shower enclosure in a rich soft light - bringing any dark shower to life. Ideal for all types of bathroom and shower applications, and is particularly suitable for bedsit and en-suite shower installations. LuminAir has a LED MR16 3W DC 12V Lamp, to give a pool of soft warm light. The lamp has a long life and is simple to change. Comes with a LED Driver, Input: AC100-240V, 50/60Hz, Output: DC12V 500mA, LED Power - 3-5W

Models

For applications where a more powerful system is required, the kit comprises a luminair turbo L or T mains fan and SELV light, choice of bezel, 90° bend, 6 metres of flexible duct, quick fix wall grille and four cable ties. Meets Building Regulations approved Document F performance assuming ductwork provided is fully extended and one 90° bend.

LuminAir Turbo SKL (Switch Live)

Provides simultaneous On and Off operation of the fan and light switch from the bathroom light switch.

| | |
|-----------|-----------|
| Model | Stock Ref |
| SKL White | 453419C |

LuminAir Turbo SKT (Timer)

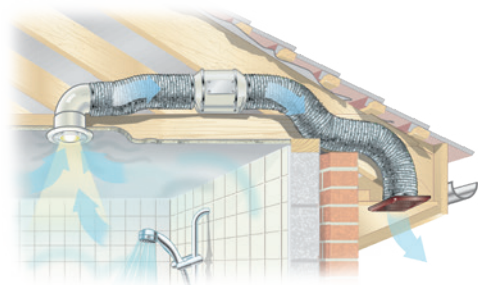
Switches the fan On with the light switch. When the light is switched Off, the fan continues to run for an adjustable fixed period to meet the Building Regulations for internal bathrooms.

| | |
|-----------|-----------|
| Model | Stock Ref |
| SKT White | 453422C |

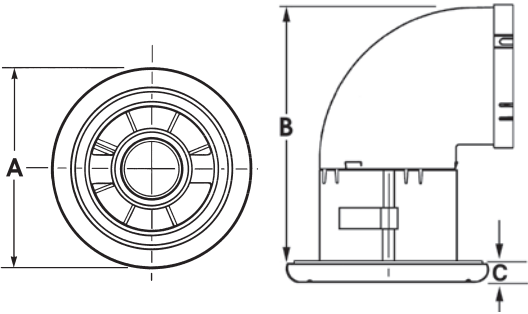
Accessories

| | |
|-----------------------|-----------|
| Model | Stock Ref |
| Optional Bezel Chrome | 452044 |

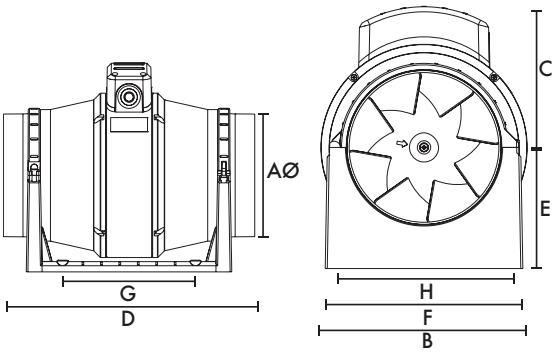
Installation Example



Dimensions (mm)
Vent Light and Bend



Turbo Fan



| Model | AØ | B | C | D | E | F | G | H |
|------------|-----|-----|-----|-----|----|-----|-----|-------|
| Vent Light | 150 | 180 | 10 | | | | | |
| Turbo Fan | 97 | 178 | 124 | 298 | 96 | 168 | 120 | 153.5 |

Ceiling Fixing hole diameter 110mm

Performance

| Model | Extract Performance - FID | | Watts | | Sound dB(A) | Amps |
|---------|---------------------------|-----|-------|------|-------------|--------|
| | m³/h | l/s | Fan | Lamp | @ 3m | @ 240V |
| SKL/SKT | 160 | 52 | 8 | 3 | 23 | 0.3 |